

PART N 1/2 OF SEC. 7, T.5N., R.2W., S.L.B. & M.
JAY R. BEUS SUBDIVISION NO. 2

186

IN WEBER COUNTY

TAXING UNIT: 32

SCALE 1" = 30'

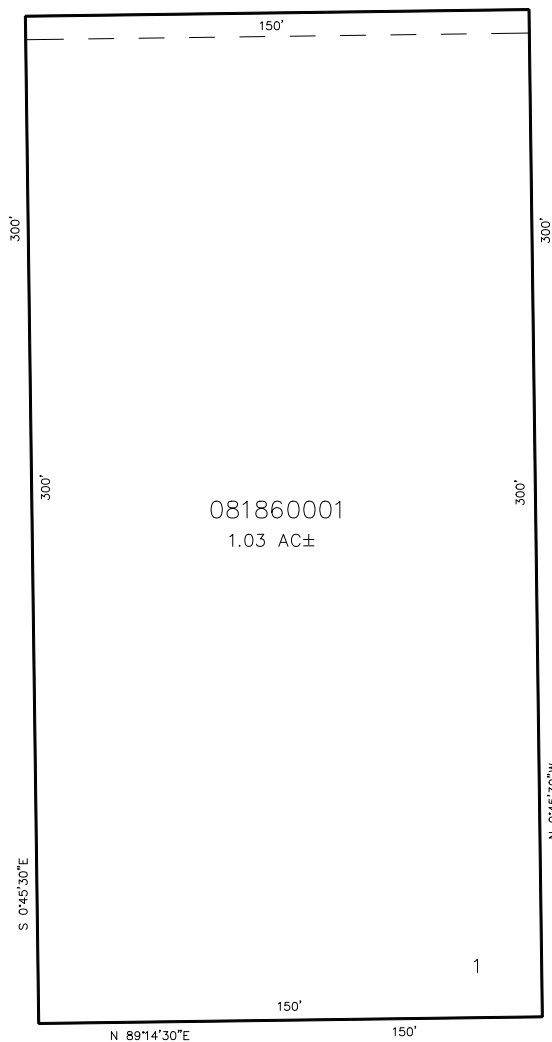
SEE PAGE 47

4000 SOUTH ST.

SEE PAGE 47

081860001
1.03 AC±

SEE PAGE 47



7' UTILITY EASEMENT AS SHOWN
BY DASHED LINE.

SEE PAGE 47

FOR COMPLETE ENG. DATA SEE
ORIG. DEDICATION PLAT IN
BOOK 28, PAGE 55 OF RECORDS.